

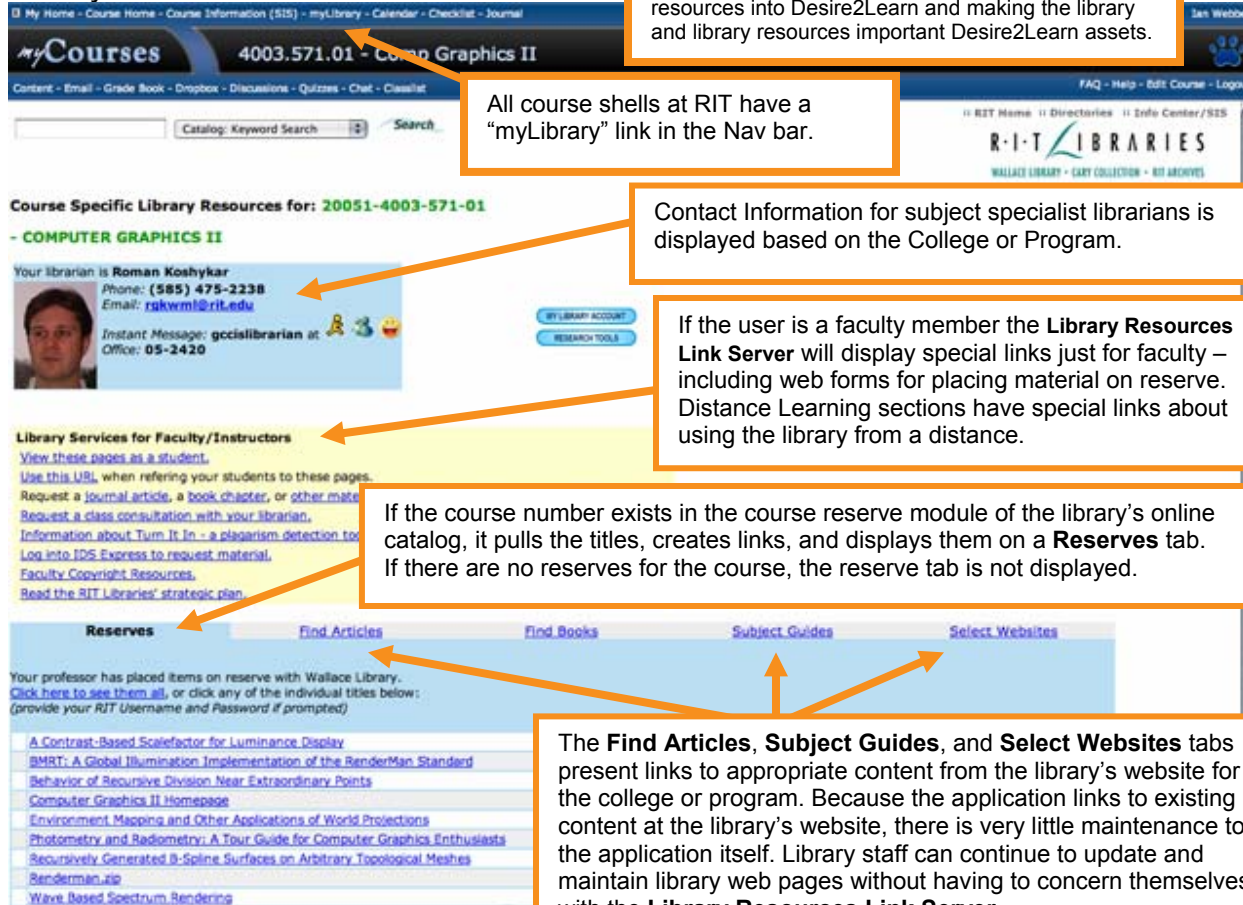
Integrating Library Resources into D2L Courses

A presentation by the Rochester Institute of Technology and Monmouth University

www.Desire2Learn.com

2006 Desire2Learn Users' Conference, July 31, 2006; Guelph, Ontario, Canada

Rochester Institute of Technology Library Resources Link Server screenshot



Even though the **Library Resources Link Server** is a separate application, on a different server, it displays in a frameset – completely integrating library resources into Desire2Learn and making the library and library resources important Desire2Learn assets.

All course shells at RIT have a “myLibrary” link in the Nav bar.

Contact Information for subject specialist librarians is displayed based on the College or Program.

If the user is a faculty member the **Library Resources Link Server** will display special links just for faculty – including web forms for placing material on reserve. Distance Learning sections have special links about using the library from a distance.

If the course number exists in the course reserve module of the library's online catalog, it pulls the titles, creates links, and displays them on a **Reserves** tab. If there are no reserves for the course, the reserve tab is not displayed.

The **Find Articles**, **Subject Guides**, and **Select Websites** tabs present links to appropriate content from the library's website for the college or program. Because the application links to existing content at the library's website, there is very little maintenance to the application itself. Library staff can continue to update and maintain library web pages without having to concern themselves with the **Library Resources Link Server**.

Contacts for RIT implementation:

General info: **Susan Mee** (samwml@rit.edu) 585-475-2568; Library Coordinator for Distance/Online Learning and College of Applied Science Librarian
 Technical info: **Jonathan Jiras** (jjwml@rit.edu) 585-475-7737; Library Technology Specialist

This handout, a 6 minute flash video overview, streaming presentations (with audio), and sample code is available at:

<http://library.rit.edu/desire2learn/>

The myLibrary link is a URL that passes the “OrgUnitCode” and “RoleID” as parameters to a **Library Resources Link Server**.

To create the URL in Desire2Learn, simply edit the Nav Bar and include the parameters like this:

http://ellie.rit.edu/d2l/course.cfm?CourseNum={OrgUnitCode}&Role={RoleID}

Here is a sample URL, with the parameters filled in:

http://ellie.rit.edu/d2l/course.cfm?CourseNum=400357101.20051&Role=577

The **Library Resources Link Server** parses the course number and role to determine what information to display.

Here is a sample RIT course number:

CourseNum=**400357101.20051**

40 = College of Information Technology & Computing Sciences

03 = Software Engineering Program

571 = Course Number

01 = Section number

20051 = 1st Quarter of 2005 (Fall, 2005 quarter)

Role=**577**

577 = faculty view

The integration of library resources into Desire2Learn course shells is scalable for each program and department. Each individual subject specialist librarian can decide how far and at what level they want to supply resources at the college or program level.

Feel free to visit the following URLs and see the application in action. If you were viewing these from within Desire2Learn course shells, you would see them in a D2L frameset. (These are actual URLs with real course content as of August, 2006).

Student view of a course with library managed reserves:

<http://ellie.rit.edu/d2l/course.cfm?CourseNum=400357101.20051&Role=575>

Faculty view of the same course:

<http://ellie.rit.edu/d2l/course.cfm?CourseNum=400357101.20051&Role=577>

Student view of a course without library managed reserves:

<http://ellie.rit.edu/d2l/course.cfm?CourseNum=052210101.20051&Role=575>

Student view of a distance learning course with reserves:

<http://ellie.rit.edu/d2l/course.cfm?CourseNum=068832590.20054&Role=575>

Integrating Library Resources into D2L Courses

A presentation by the Rochester Institute of Technology and Monmouth University

www.Desire2Learn.com

Monmouth University Presenters:

Wendy Savoth, Director of Instructional Technology, wsavoth@monmouth.edu

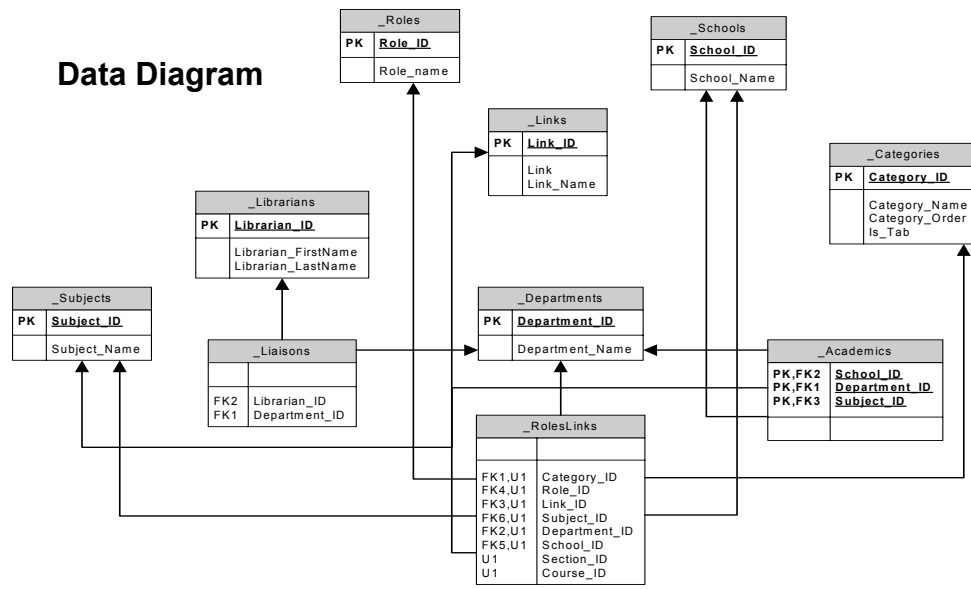
Denise Kreiger, Instructional Designer, dkreiger@monmouth.edu

Monmouth University

D2L Course Home Page

MU Library Interface Page

Data Diagram



SQL Code

```

    • $query = "
    • select
    •   rl.category_id,
    •   rl.role_id,
    •   rl.link_id,
    •   rl.subject_id,
    •   rl.department_id,
    •   rl.school_id,
    •   l.link_id,
    •   l.link,
    •   l.link_name,
    •   c.category_order
    • from
    •   _roleslinks rl left outer join
    •   _links l on
    •     l.link_id = rl.link_id left outer join
    •   _categories c on
    •     c.category_id = rl.category_id
    • where
    •   (rl.school_id = ".$schoolID." or rl.school_id = 'ALL')
    •   and (rl.department_id = ".$departmentID." or rl.department_id = 'ALL')
    •   and (rl.subject_id = ".$subjectCode." or rl.subject_id = 'ALL')
    •   and (rl.course_id = ".$courseCode." or rl.course_id = 'ALL')
    •   and (rl.section_id = ".$sectionCode." or rl.section_id = 'ALL')
    •   and (rl.role_id = ".$roleID." or rl.role_id = 0)
    • order by c.category_order;"
  
```